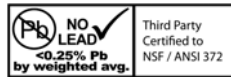


Pressure Gauges

Pressure Gauges - General Purpose



Center Back



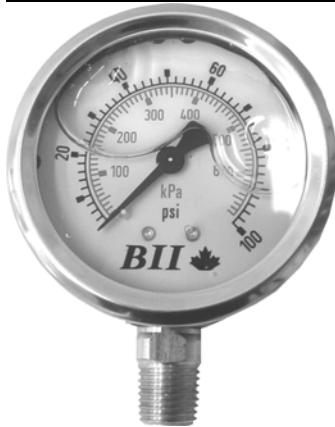
- General purpose, not for use with oxygen
- Lead Free Brass Connection
- Steel Case
- Ambient Operating Temperature: 0 to 40°C (32 to 104°F)
- Accuracy: 3% - 2% - 3% Grade B
- Bourdon Tube
- Acrylic Window
- Maximum Media Temperature: 40°C (104°F)

Lower Mount					
PSI	Connection	Increments	2" Dial	2 1/2" Dial	4 1/2" Dial
0-15	1/4"	0.1, 0.2	PG-15NL	PG25-15NL	PG45-15NL
0-30	1/4"	0.5	PG-30NL	PG25-30NL	PG45-30NL
0-60	1/4"	1	PG-60NL	PG25-60NL	PG45-60NL
0-100	1/8"	1	PG-0-100NL	N/A	N/A
0-100	1/4"	1	PG-100NL	PG25-100NL	PG45-100NL
0-160	1/4"	2	PG-160NL	PG25-160NL	PG45-160NL
0-200	1/4"	2	PG-200NL	PG25-200NL	PG45-200NL
0-300	1/4"	5	PG-300NL	PG25-300NL	PG45-300NL
0-400	1/4"	5	N/A	PG25-400NL	PG45-400NL
0-600	1/4"	10	N/A	PG25-600NL	PG45-600NL
Center Back Connection - Male NPT					
0-15	-	-	N/A	-	-
0-30	1/4"	0.5	PGCBM-1-30NL	-	-
0-60	1/4"	1	PGCBM-1-60NL	-	-
0-100	1/8"	1	PGCBM-0-100NL	-	-
0-100	1/4"	1	PGCBM-1-100NL	-	-
0-160	1/4"	2	PGCBM-1-160NL	-	-
0-200	1/4"	2	PGCBM-1-200NL	-	-
0-300	-	-	N/A	-	-
0-400	-	-	N/A	-	-
0-600	-	-	N/A	-	-



Pressure Gauges

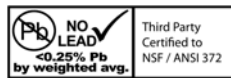
Pressure Gauges - Liquid Filled



Lower Mount



Center Back



- General purpose, not for use with oxygen
- Use where vibration or pressure pulsation occur
- Accuracy +/- 1.5% Full Scale Value
- 304 Stainless steel case with vent plug
- Ambient Operating Temperature: -20° to 60°C (-4° to 140°F)
- Maximum Media Operating Temperature: 60°C (140°F)
- Polycarbonate Window
- Glycerine Filled
- Bourdon Tube
- Brass or Lead Free Brass Connection
- Gauges 15 to 600 PSI are tapped for a Restrictor Screw (not included) 1000 PSI or more are tapped and include Restrictor Screw

Lower Mount				
PSI	Connection	Increments	2 1/2" Dial	4 1/2" Dial
0-15	1/4"	0.2	PG25-15-GNL	PG40-15-GNL
0-30	1/4"	0.5	PG25-30-GNL	PG40-30-GNL
0-60	1/4"	1	PG25-60-GNL	PG40-60-GNL
0-100	1/4"	1	PG25-100-GNL	PG40-100-GNL
0-160	1/4"	2	PG25-160-GNL	PG40-160-GNL
0-200	1/4"	2	PG25-200-GNL	PG40-200-GNL
0-300	1/4"	5	PG25-300-GNL	PG40-300-GNL
0-400	1/4"	5	PG25-400-GNL	PG10-400-GNL
0-600	1/4"	10	PG25-600-GNL	PG40-600-GNL
0-1000	1/4"	20	PG25-1000-GNL	-
Center Back Connection				
0-15	1/4"	0.2	PG25CBM-15-GNL	-
0-30	1/4"	0.5	PG25CBM-30-GNL	-
0-60	1/4"	1	PG25CBM-60-GNL	-
0-100	1/4"	1	PG25CBM-100-GNL	-
0-160	1/4"	2	PG25CBM-160-GNL	-
0-200	1/4"	2	PG25CBM-200-GNL	-
0-300	1/4"	5	PG25CBM-300-GNL	-
0-400	1/4"	5	PG25CBM-400-GNL	-
0-600	1/4"	10	PG25CBM-600-GNL	-



Liquid filled gauges are sealed with a rubber plug to prevent leaking during shipment. Upon installation, the tip of the plug must be cut off to allow the equalization of the internal gauge pressure to the atmospheric pressure. Failure to do so will adversely effect the function of the gauge.



Pressure Gauges

Specialty Gauge - Compound - Bottom Mount - 3 1/2" Dial



- Use for measurement of steam, air, oil, water, and other pressure media which have no effect on bronze
- Steel case
- Restrictor screw
- Brass connection

psi Range	kPa	Dial Size	Connection Size	Increments	Brand	Part Number
30"-0-100	30"-0-100	3 1/2"	1/4"	200	Winters	Q233

Specialty Gauge - Vacuum - Bottom Mount - 2" Dial



- General purpose, not for use with oxygen
- Plastic or steel case
- Ambient operating temperature: 0 to 40C (32 to 104F)
- Plastic case acrylic, steel case glass
- Brass connection

psi Range	Dial Size	Connection Size	Increments	Brand	Part Number
30-0 HG	2"	1/4"	1/2	Boshart	PGV30

Accessory - Brass Gauge Snubber



- For use with any gauge subjected to rapidly fluctuating pressures or sudden shock pressures
- Use on light oils, gasoline or water

Pressure Rating	Connection Size	Brand	Part Number
10,000 psi	1/4" NPT male x female	Boshart	PGABSE

Siphon Loop (Pig Tail) - Lead Free



- Used to reduce steam or other process media temperature prior to entering pressure gauge or transmitter
- Lead free
- 5 3/4" total length, 2 5/8" total width

Description	Brand	Part Number
Schedule 40 Steel Pipe, 1/4" MPT x 1/4" MPT Will function properly and withstand pressure of 600 lbs per square inch and temperature of 750°F	Boshart	PGA-PTS-02
Schedule 40 Red Brass Pipe, 1/4" MPT x 1/4" MPT Will function properly and withstand pressure of 200 lbs per square inch and temperature of 406°F	Boshart	PGA-PTB-02

This Page is
Temporarily
Blank