



# Liquid Level Alarms & Controls

## Water Leak Alert



- Audible alert when there is a leak
- Works with water heaters, sumps pumps and other HVAC applications
- Can be hardwired to a self powered water heater with a Honeywell gas valve to turn the main burner off to create a secondary notification of cold water
- Can be connected to the Prestige® IAQ with an EIM to have an alert pop up on the thermostat
- Includes a 5 foot water sensing cable that is reusable after detecting an incident. Additional cables can be added up to 240 feet.
- Simply mount to the side of the water heater or any other place prone to leaks
- Easy upsell: Homeowners are more aware of leaks when replacing a leaky water heater, have Leak Alert installed with the new water heater
- 5+ years battery life (2 AA included)

## Honeywell

Dimensions	Includes	Brand	Part Number
3 1/16" W x 3 1/16" H x 1 1/4" D	Water leak alert, 5' cable sensor, 2AA batteries, water heater mounting hardware, homeowner awareness label	Honeywell	<b>WHLDT1000</b>

## Lyric™ Wi-Fi Water Leak and Freeze Detector



- Part of Honeywell's trusted Lyric connected platform. It can be used as a stand alone product or part of a complete system.
- Connected by Lyric App, it alerts you on your smartphone when a leak is detected or the temperature drops below a temperature of your choice
- Includes a 4 foot water sensing cable. Additional cables can be added up to 500 feet.
- Easy setup, no wiring
- Battery life is up to 3 years with easy maintenance (3 AA included)
- Water Sensing Rate: 1 time per minute
- Unit is reusable after a detection
- Temperature Alert Detection: Below 45°F(7°C) or above 100°F(38°C) are default settings; can be changed
- Humidity Alert Detection: Below 20% RH or above 70% RH are default settings; can be changed
- Regulatory: FCC, IC

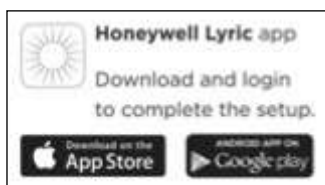
## Honeywell Lyric™

Dimensions	dBA	Temperature Sensing	Brand	Part Number
3.07" square x 1.26" thick	100	32°F-140°F (0°C-60°C)	Honeywell	<b>CHW3610W1001</b>
4 Pack of #CHW3610W1001			Honeywell	<b>YCHW4000W4004</b>
4 Foot Cable Sensor for Lyric Water Leak Detector			Honeywell	<b>CHWES41013</b>



Minimum System Requirements for Use with Wi-Fi:

- IEEE 802.11 b/g/n/ac capable routers, 2.4 GHz
- Lyric app for Android (4.3+) or iOS (8+)
- App is only available in English



# Liquid Level Alarms & Controls

## Tank Level Alarms & Controls

### Tank Alert® AB Alarm System



- For indoor use, this alarm system monitors liquid levels in lift pump chambers, sump pump basins, holding tanks, sewage, agricultural and other non-potable water applications
- Alarm sounds when threatening liquid level conditions occur
- If primary power fails the alarm continues to work due to battery back-up feature
- A green "power on" light indicates power to the alarm panel
- A red "warning" light indicates threatening liquid level conditions
- Automatic alarm reset, alarm test switch and horn silence switch
- Comes with battery back-up power: 9VDC
- 6' power cord
- Float Switch Max Water Depth: 30' (9 meters), 13psi
- Warranty: 5 year limited

Activates On	Volts / Hz / Watts	Alarm Enclosure	Includes	Brand	Part Number
High Level	120 / 50-60 / 2.4	NEMA 1	15' Sensor Float® for High Level & mounting clamp	SJE Rhombus	1011421
Low Level	120 / 50-60 / 2.4	NEMA 1	15' SJE SignalMaster® Low Level control switch & mounting clamp	SJE Rhombus	1011424
High Level	120 / 50-60 / 2.4	NEMA 1	15' SJE SignalMaster® High Level & auxiliary contacts	SJE Rhombus	1012668

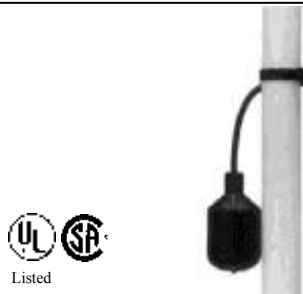
### Tank Alert® XT Alarm System



- For indoor or outdoor use, this alarm system monitors liquid levels in lift pump chambers, sump pump basins, holding tanks, sewage, agricultural and other non-potable water applications
- Alarm sounds and the red beacon illuminates when threatening liquid level conditions occur
- Automatic alarm reset, horn silence switch and alarm test switch
- Warranty: 5 year limited
- **Alarm only, must order alarm control switch #1006095 separately**

Activates On	Volts / Hz / Watts	Alarm Enclosure	Includes	Brand	Part Number
Low Level	120 / 50-60 / 7	Type 3R	15' Sensor Float® for Low Level with terminal block	SJE Rhombus	1005835
No Float	120 / 50-60 / 7	Type 3R	Terminal block	SJE Rhombus	1005836
High Level	120 / 50-60 / 7	Type 3R	15' Sensor Float® for High Level, auxiliary contacts & terminal block	SJE Rhombus	1006850
High Level	120 / 50-60 / 7	Type 3R	15' SJE SignalMaster® High Level & auxiliary contacts	SJE Rhombus	1012416

### SJE SignalMaster® Control Switch



- Mechanically activated, narrow-angle float switch designed to activate pump control panels & alarms in water, potable water and sewage applications. This switch is not recommended for controlling electric loads less than 100 milliamps, 12 VAC or non-arcing electric loads.
- Not sensitive to rotation
- Control Differential: 1.5" above or below horizontal
- High impact, corrosion resistant float up to 60C (140F)
- Float Switch Max Water Depth: 30' (9 meters), 13psi
- Warranty: 5 year limited
- **Signal Master meets NSF 61 Standard for use in potable water**

Activates On	Volts / Hz / Watts	Alarm Enclosure	Includes	Brand	Part Number
High or Low	125-250 / 50-60 / 5	-	15' Cable with mounting clamp (18 gauge, 3 conductor)	SJE Rhombus	1006095
High or Low	125-250 / 50-60 / 5	-	30' Cable with mounting clamp (18 gauge, 3 conductor)	SJE Rhombus	1006097



# Liquid Level Alarms & Controls

## Auto Dialer - Home Monitoring



- Voice Dialer, used with any device that can provide a normally open/ normally closed contact.
- Non-volatile (EEPROM) memory for voice message and telephone numbers
- Calls up to four telephone numbers, any combination of telephone or pagers. Sends up to 16 second voice message to telephones or numeric code to pagers
- Record your own message in any language. Easily change message and telephone numbers without a programmer
- Voice chip technology. Ability to program up to 10 (2 second). Dials each outgoing telephone number a maximum of 10 times
- 2x16 character LCD window
- Internal playback speaker for voice messaging. Programmable exit and entry delay
- Internal 9V battery backup
- Works with PBX or regular telephone system
- NC, NO, momentary, continuous or voltage activation
- Internal protection transient overload conditions
- Warranty: 5 year limited

Enclosure	Voltage	Battery Back up Power	Activation	Programmable Pauses	Part Number
6" x 4" x 1.5"	9-18 VDC (12 VDC plug in power supply included)	9 VDC	NO or NC, momentary or continuous dry contact activation Voltage Activation: 1 to +V (NC operation) or +V to 0 (no operation) NOTE: +V limited from 5-28 VDC	10 max	1012019

## MySpy™ Wi-Fi Messenger - Indoor Alarm System



- Monitors and reports any residential alarm condition (contact closure), including sump high water level (float switch) or under/over temperature alarms
- Notifies by audible and visual alarm, and remotely via SMS text messages and Email
- Works with existing Wi-Fi or Ethernet network
- NEMA 1 enclosure for indoor use
- Auto alarm reset
- LED indicators and network status
- Notifies 4 contacts
- Back up battery
- Low battery chirp
- External terminal block for easy float switch installation
- Auxiliary contacts included to connect remote devices
- 15' SJE SignalMaster High Level control switch, with mounting clip included. Alternate float switches can be used with this device.
- 6' power cord

Enclosure	Voltage	Battery Back up Power	Auxiliary Alarm Contacts	Alarm Decibels	Part Number
6" x 4" x 2.25" NEMA 1	120 VAC, 50/60 Hz, 2.4 watts max	9 VDC	120 VAC, 0.5 amps max N/O, 0.5 amp max N/C	87 at 10 ft (3 meters)	1043586



# Liquid Level Alarms & Controls

## PS Patrol® System - Water Alarm



- Built-in high water alarm and provides a convenient location to connect all wiring required for a pumping station installation
- Employs a receptacle to accept a 120 VAC pump and piggy-back style pump switch
- Enclosure meets Type 3 watertight standards and is designed for outdoor use
- Removable cover provides greater access for field wiring and service
- Automatic alarm reset, horn silence and alarm test
- 360 visual alarm; audible alarm
- Red LED illuminates cover in alarm condition
- Green Power On light
- Auxiliary alarm contacts included for easy attachment of remote alarm
- Cord seal included for sealing switches and pump cable
- Electrical potting cavity provides easy reliable method to seal power cables (user to provide duct seal)
- Options include various switch cord lengths, riser assembly adapter, DUO alarm, and elapsed time meter

Model	Alarm Voltage	Pump Voltage	FLA	Includes	Part Number
PSP120V6H17A	120 VAC 50/60 Hz	120 VAC 50/60 Hz	0-15	No pump switch, 20' SJE SignalMaster®, with mounting post	1022728
PSP2120V6H151P17J			7-15	20' Sensor Float®, 20A circuit breaker, with mounting post	1019021
PSP2120V6H8A17A			0-15	ETM, 20' SJE SignalMaster®, with mounting post	1022575
PSP2120V6H1JV8A17A			0-15	Duo alarm, ETM	1022577
Assembly Kit		N/A		Riser Extension Coupling and Washers	1011551

## NEX Series™ Control Panel - Single Phase Simplex



- Designed to control one single phase pump in water and wastewater applications.
- Two control switches activate a power relay to turn the pump on and off. If an alarm condition occurs, an additional alarm switch activates the audible/visual alarm system.
- The compact design 8 x 6 x 4" is ideal for residential applications.
- Universal pump voltage and control/alarm power allow the NEX Series™ panel to handle three voltages (120/208/240V).
- Innovative internal design of components and integral mounting tabs make installation quick and simple
- Entire control system (panel and switches) is UL Listed to meet and/or exceed industry safety standards
- Dual safety certification for US and Canada
- Standard package includes three 20' SJE SignalMaster control switches
- Five year limited warranty

Voltage Supply for Pump & Control/Alarm	Enclosure	Float Control Voltage	Pump Amps	Auxiliary Alarm Contacts	Part Number
120/208/240 VAC, 50/60 Hz	8" x 6" x 4" (20.32 x 15.24 x 10.16 cm) NEMA 4X indoor/outdoor rated	12 VDC	0-12 Amps; 9-20 Amps	Form C, 5 Amp, 120 VAC Max	1046437



# Liquid Level Alarms & Controls

## Davies Supplies Non-Contacting Level & Flow Meter SLT 5.0 for Tank Inventory, Pump Control and Open Channel Flow



**GREYLINE**  
instruments inc.

Specify SLT 5.0 for inventory monitoring and level control of chemicals, wastewater, viscous or corrosive liquids. Built-in control relays are programmable for pump control, pump alternation and level alarms.

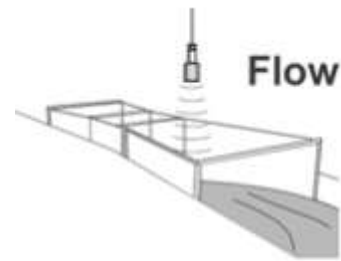
Displays, transmits and totalizes wastewater flow through any flume or weir. Features a simple, password protected calibration system, automatic totalizer and flow proportionate control relays.

Each SLT 5.0 includes a non-contacting ultrasonic sensor which mounts above the material being measured. There is no contact and no moving parts. The sensor is sealed to withstand accidental submersion and rated for hazardous locations with optional intrinsic safety barrier.



Level

- Displays Continuous Level
- Controls Pumps and Alarms
- Transmits 4-20mA



Flow

- Works with any Flume or Weir
- Built-in Totalizer
- Password protected

## EchoPod® DL34 - Ultrasonic Level Transmitter, Switch & Controller



**FLOWLINE**

- ◆ Provides continuous level measurement up to 18.0' (5.5m) with a 4-20 mA signal output, and is configured via free Webcat software
- ◆ 4 programmable relays with selectable hysteresis and fail-safe logic
- ◆ Embedded level controller can lower cost by replacing external control hardware
- ◆ Ideally suited for corrosive, sticky or dirty liquids, and is widely selected for day tank, skid, IBC, sump and process tank level applications
- ◆ PVDF transducer and 6P polycarbonate enclosure
- ◆ Automatic temperature compensation for accurate measurement

### Compatible Products

DataLoop™  
Level Indicator



LI25

DataView™  
Level Controller



LI55

Commander™  
Multi-Tank Level Controller



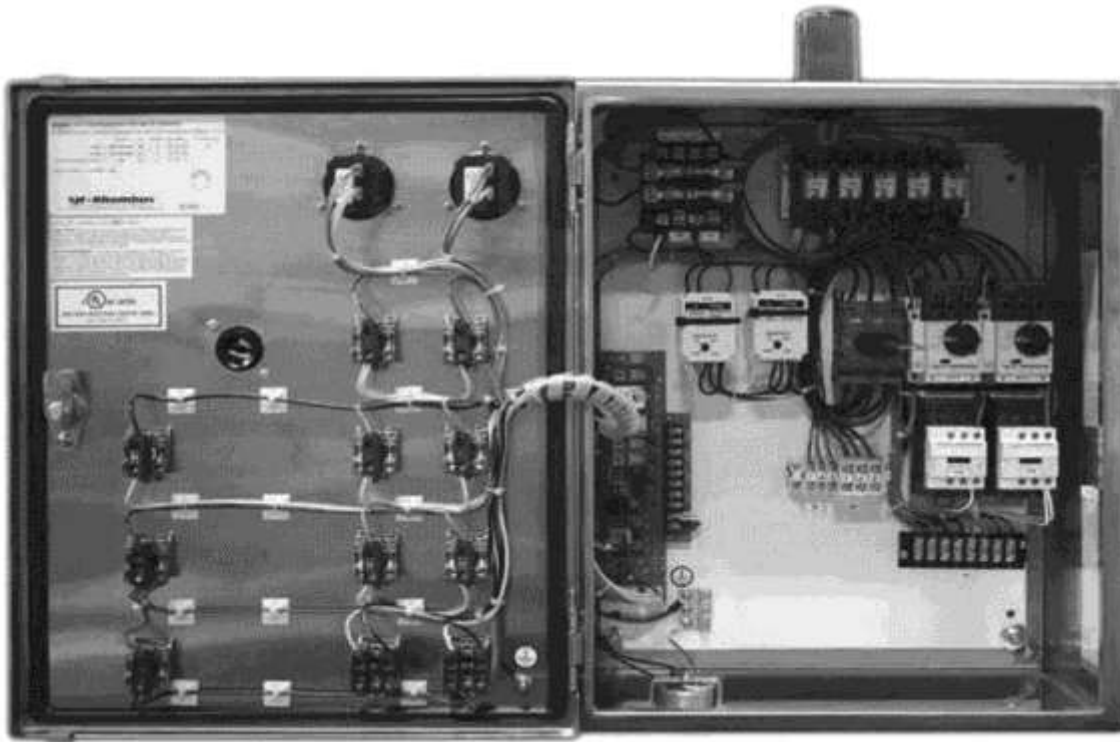
LI90

DataPoint™  
Level Controller



LC52

# Liquid Level Alarms & Controls



## BUILD-A-PANEL™ PLUS

### Expanded Build-A-Panel™ Program

Enjoy the quality, flexibility and versatility of our leading Build-A-Panel™ control panels, **PLUS** so much more!

Our new **Build-A-Panel™ PLUS Program** is design to benefit customers who require additional options beyond what our standard control panel line offers, but do not require a custom engineered solution.

The **Build-A-Panel™ PLUS Program** utilizes inventoried components to allow for:

- Quick response to quotes (within 24 hours is standard)
- Faster build-to-ship time (5-10 days based on options)
- More affordable solutions

*Don't see the option you need listed? Let us know!  
We may be able to offer it through the **PLUS** program  
or we can design a custom engineered solution for you!*

**SIE**  
**Rhombus**

Example of Build-A-Panel™  
PLUS Control Panel Shown



### Options Include

- Larger enclosure sizes up to 28 x 20 x 10 inches
- Stainless steel enclosures
- 22mm switches and lights
- Lag pump time delay
- Auxiliary contacts for many functions
- Door mounted elapsed time meter
- Door mounted control and alarm power on indicators
- Installed auto dialer
- GFI receptacle with circuit breaker (single phase only)
- Timed dose for intrinsically safe
- 208/240V single phase incoming power
- Surge protection
- And more!



## Liquid Level Alarms &amp; Controls

# EZ Series Simplex Panel



**Easy Installations with EZ Series® Panels from SJE-Rhombus!**

The **NEW EZ Series® Single Phase Simplex** panel is designed to control one 120/208/240V single phase pump in water and sewage installations. It features a **digital display** on the inside of the front cover for programming pump control and system monitoring. This innovative control panel is **easily converted** to demand or timed dose in the field. **EZ Series® Simplex** panel is **UL/cUL Listed** and backed by a **three-year limited warranty**. **Duplex model available!**

**EZ Series® Simplex Features:**

- ➊ **NEMA 4X enclosure** with hinged cover for indoor/outdoor use
- ➋ **Locking latch** (standard) for added safety
- ➌ **Flashing red alarm beacon** on cover; audible alarm horn
- ➍ **External indicators** for control power, alarm power and pump run
- ➎ **External test/silence switch** for easy operation
- ➏ **Digital display features:**
  - Float status
  - Elapsed time pump run
  - Cycle counter
  - Alarm counts (high water/power fail)
  - Float error count
  - Auxiliary alarm counter
  - Timer override count (TD only)
  - On time (TD only)
  - Off time (TD only)
- ➐ **Pump Run button**
- ➑ **Menu/Enter & Set/Change buttons** for programming and viewing control panel
- ➒ **Large terminal strip** for easy wiring
- ➓ **Two circuit breakers:** one for pump power; another for control and alarm power
- ➑ **Pump run relay** (30 amp) controls pump by switching electrical lines
- ➒ **Field wiring diagram**
- ➓ **Easy-to-follow programming and operation label**
- ➑ **Auxiliary alarm contacts** (standard)

**Optional Post Features:**

- ➑ **Post** can be mounted directly into ground, over a 4x4, or conduit for **quick, clean, easy installation**
- ➒ **Post** features **removable access door** for easy wiring

**Available Options:**  
Duo alarms for local code compliance

**SJE Rhombus**

Optional mounting post shown here.



# Liquid Level Alarms & Controls

## Alarms - Level Monitoring Control Solutions



### C-Con™ Converter Box\*

**Converts most control panels to floatless technology.**

The C-Con™ converts the signal from the C-Level™ sensor to simulate up to 4 float levels:

- NEMA 1 rated for indoor use
- Can be mounted inside a control panel
- Green power on indicator
- Four adjustable setpoints with red LED status indicators
- Adjust pump start/stop and alarm levels from converter box
- Simulate button for testing proper wiring of outputs
- Factory-installed input/output wires
- Excellent for systems with a high grease content or confined space applications
- **C-Con™ Box available with CL40 model only**



### SJE Level Monitor™ CL System

**With a glance, see the level in your tank.**

The SJE Level Monitor™ CL system uses the C-Level™ sensor to monitor the level in the tank:

- 10 segment LED scalable bar graph displays level as percentage of full tank
- Green power on LED indicator
- Red alarm LED indicator; audible alarm
- Alarm level and set buttons for adjusting alarm setpoint
- Test/silence button
- Auxiliary contacts (NO/NC)



### Installer Friendly Series® In-Site® Data Logging Control Panels

Single Phase; Simplex, Duplex; Demand or Timed Dose

IFS In-Site® control panels offer all the features of an IFS panel, **PLUS data logging!** Monitor system events by plugging a flash drive into the USB port located on the inner door to download system history. The pre-loaded software on the flash drive formulates the data for you, creating easy-to-read reports so system conditions can be quickly identified and corrected.

**Logged events include:**

- Pump run times
- Pump cycles
- Alarm conditions
- Power outages
- Service calls

Event Log Screen



### EZ Series® In-Site® CL Control Panels

Single Phase; Simplex, Duplex; Demand or Timed Dose

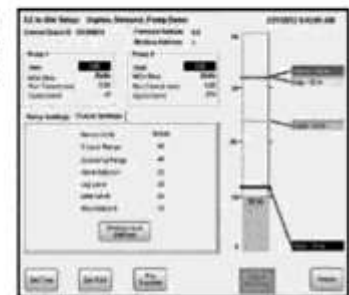
EZ Series® In-Site® CL control panels feature a digital display on the inside of the front cover and are designed to quickly connect to a laptop computer for system programming, monitoring and reporting.

**Logged events include:**

- Pump run times
- Pump cycles
- Alarm conditions
- Power outages
- Service calls

**Control panel features (standard):**

- NEMA 4X enclosure with hinged cover for indoor/outdoor use
- Locking latch for added safety
- Circuit breaker provides branch circuit protection and pump disconnect
- Auxiliary alarm relay
- Tank level indicator
- Can be easily set to demand or timed dose
- Optional mounting post features removable access door for easier wiring



EZ Connect Programming Screen



# Liquid Level Alarms & Controls

*Davies Supplies Liquid Level Alarms & Gauges From*



# Aquatic Sentry

C O N T R O L S



**Model 100**



**Model 110 Wireless**



**Model 200**



**Model 200C**

*Reliable, simple and accurate liquid level monitoring and control*

# Seametrics

## Irrigation



AG2000 Series



TX Series



FT Series



RSP5

- Flow Monitoring and Control
- Magnetic Flow Meters (Magmeters)
- Paddle Wheel Flow Meters
- Rate Indicators - 4 Displays
- Batch Control
- Data Logging
- 4-20mA Outputs
- Pulse Outputs
- Parts & Accessories
- Solar Panel

**Contact Davies Fluid Dept. for Application Assistance**

## Liquid Level Alarms & Controls

### Pump Switch - OEM - Water Wizard® Remote Switch



- These remote switches will convert a manual pump to automatic operation
- UL and CSA listing on 115 V models only
- One Year Limited Warranty



Application	On / Off Level	Volts / Amps	Cord	Brand	Part Number
Will Convert Up to 1/3HP	2-3" / .5-1.5"	115 / 10	18'	Little Giant	<b>599014 (RS-5LL)</b>
Will Convert Up to 1/2HP	6-9" / 1-4"	115 / 10	10'	Little Giant	<b>599008 (RS-5)</b>
Will Convert Up to 1/2HP	6-9" / 1-4"	230 / 10	8'	Little Giant	<b>599010 (RS-5)</b>

**LittleGIANT.**

# Liquid Level Alarms & Controls

## Pump Switch - Mechanical



- Mechanical type for open tank or sump applications
- Opens and closes an electric circuit by an upward or downward movement of the lever arm
- Single lever operated
- Tapped at top float
- 2 pole contacts
- Temperature rating: -40 to 85C (-40 to 185F)
- Horizontal mounting

Switching Action	HP at Volts (single phase AC)	Max Force to Trip	Enclosure	Brand	Part Number
Pump Up (Close on Liquid Rise)	2HP at 115VAC 3HP at 230VAC	9oz Up, 8oz Down	NEMA 1	Square D	9036DG2
Reverse Action Kit - Converts Pump Switch 9036DG2 to Pump Down (reverse acting)					9049A58

## Pump Switch - Mechanical



- Mechanical type for open tank or sump applications
- Designed to start an electric motor on liquid level rise and stop the motor on liquid level drop
- Range Adjuster: Conduit wiring
- Includes 36" cable and 2 weights
- Maximum temperature: 60C (140F)
- External mounting

Switching Action	HP at Volts	Includes	Brand	Part Number
DPST	1HP at 120VAC & 240VAC, 1/4HP at 32VDC	Mounting bracket	Johnson Controls	F59H-1C
DPST	1HP at 120VAC & 240VAC, 1/4HP at 32VDC	Mounting bracket less weight & cable kit	Johnson Controls	F59H-6C
DPST	1HP at 120VAC & 240VAC, 1/4HP at 32VDC	Universal mounting bracket & 24" strap	Johnson Controls	F59H-8000C

## Condensate Float Switch Assembly - Closed Tank



- Switches are attached to the tank by means of a 2 1/2" screw in connection
- An external pointer indicates the float position within the tank when the unit is mounted
- Buna N Quad Ring® seal is used between the float rod and sealing connector

Description	Brand	Part Number
Contact close on liquid rise. Includes stainless steel float and rod with 90° angle (offset) on float rod	Square D	9037HG32
Contact close on liquid rise. Includes stainless steel float and rod with 45° angle on float rod	Square D	9037HG33
Replacement float for 9037HG33; stainless steel	Square D	9049HF3

# Liquid Level Alarms & Controls

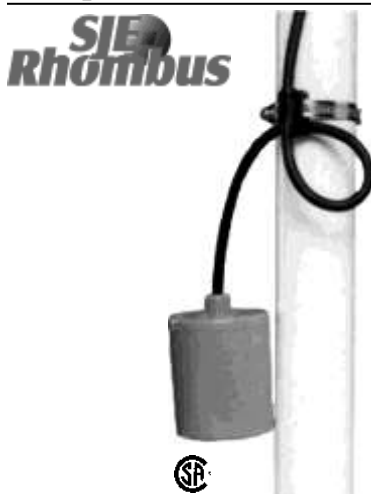
## Pump Switch - SJE PumpMaster® - Wide Angle Float



- Mechanically activated, wide-angle switch provides automatic control of pumps in potable and non-potable water and sewage applications up to 1HP
- Adjustable pumping range: 7" to 36"
- Maximum pump run current: 13 amps
- Maximum pump start current: 85 amps
- High impact, corrosion resistant float up to 60C (140F)
- Not sensitive to rotation or turbulence
- 16 gauge, 2 conductor
- Includes standard mounting strap
- This switch must be used with pumps that provide integral thermal overload protection
- Warranty: 3/5 year limited
- **SJE PumpMaster meets NSF 61 Standard for use in potable water**

Switching Action	Cable Length	Piggyback Plug	Description	HP at Volts	Ø / Hz	Brand	Part Number
Pump Up	10'	No Plug	Less weight	1/2HP at 120VAC, 1HP at 230VAC	1 / 50-60	SJE Rhombus	1002706
Pump Up	15'	120VAC	Less weight	1/2HP at 120VAC, 1HP at 230VAC	1 / 50-60	SJE Rhombus	1002721
Pump Up	15'	No Plug	With weight	1/2HP at 120VAC, 1HP at 230VAC	1 / 50-60	SJE Rhombus	1002725
Pump Up	30'	120VAC	Less weight	1/2HP at 120VAC, 1HP at 230VAC	1 / 50-60	SJE Rhombus	1002745
Pump Up	30'	No plug	With weight	1/2HP at 120VAC, 1HP at 230VAC	1 / 50-60	SJE Rhombus	1010930
Pump Down	10'	120VAC	Less weight	1/2HP at 120VAC, 1HP at 230VAC	1 / 50-60	SJE Rhombus	1002630
Pump Down	15'	120VAC	Less weight	1/2HP at 120VAC, 1HP at 230VAC	1 / 50-60	SJE Rhombus	1002715
Pump Down	15'	120VAC	Less weight	1/2HP at 120VAC, 1HP at 230VAC	1 / 50-60	SJE Rhombus	1003243
Pump Down	30'	120VAC	Less weight	1/2HP at 120VAC, 1HP at 230VAC	1 / 50-60	SJE Rhombus	1003267
Pump Down	15'	No plug	With weight	1/2HP at 120VAC, 1HP at 230VAC	1 / 50-60	SJE Rhombus	1005685
Pump Down	30'	120VAC	Less weight	1/2HP at 120VAC, 1HP at 230VAC	1 / 50-60	SJE Rhombus	1002739
Pump Down	30'	No plug	With weight	1/2HP at 120VAC, 1HP at 230VAC	1 / 50-60	SJE Rhombus	1010931

## Pump Switch - SJE PumpMaster® - Pump Up or Down



- Mechanically activated switch is designed to operate in non-potable water & sewage applications with limited space
- Adjustable pumping range: 7" to 36"
- Maximum pump run current: 13 amps
- Maximum pump start current: 85 amps
- High impact, corrosion resistant housing for temps. up to 60C (140F)
- Not sensitive to turbulence
- 16 gauge, 3 conductor
- Includes standard mounting clamp
- This switch must be used with pumps that provide integral thermal overload protection
- UL Recognized for use in water and sewage, CSA Certified
- Passed NSF Standard 61 protocol by an approved Water Quality Association laboratory
- Warranty: 3 year limited

Switching Action	Cable Length	Piggyback Plug	HP at Volts	Phase / Hz	Brand	Part Number
Pump Up or Down	15'	No plug	1/2HP at 120VAC, 1HP at 230VAC	Single / 50-60	SJE Rhombus	1004837
Pump Up or Down	30"	No plug	1/2HP at 120VAC, 1HP at 230VAC	Single / 50-60	SJE Rhombus	1004841

# Liquid Level Alarms & Controls

## SJE PumpMaster® WPS - Mechanical Float Switch for Potable Water Applications



lether length (inches)	3.5 min.	6	10	14	18	22	24 max.
approx. pump range (inches)	7	10	18	22	28	33	36



- Mechanically-activated
- Wide-angle float switch providing automatic control in potable water and water applications
- Direct control of pumps up to 1/2 HP at 120 VAC and 1 HP at 230 VAC or control applications as low as 120 VAC, 100 mA
- CSA Certified to meet NSF/ANSI 61 standard for use in potable water and approved for use in tanks of 250 US gallons in volume or greater per float.
- Can be wired to work in pump down (normally open) or pump down (normally closed)
- Includes external weight
- For us in potable water and water up to 140°F (60°C)
- Adjustable pumping range of 7-36 inches (18-91 cm)
- Heavy duty contacts
- 3 wire cable - SPDT (Single Pole, Double Throw) can be wired as normally open or normally closed

Cable	Electrical	Minimum Electrical Load	Float	Adjustable Pumping Range	Description	Part Number
flexible 16 gauge, 3 conductor (UL,CSA), SJOW, water-resistant (CPE)	120/230 VAC 50/60 Hz 13 FLA, 85 LRA	120 VAC, 100 mA	3.05" dia. x 3.56" long (7.75 cm dia x 9.04 cm long)	7-36 inches (18-91 cm)	15 ft, externally weighted	1047427

## SJE MegaMaster® - Mechanical Control Switch for Municipal Applications



- Mechanically-activated
- Internally weighted control switch is designed for municipal water and sewage applications, including applications with high grease content
- Can be wired to work in either normally open or normally closed applications
- 3 wire cable - SPDT (Single Pole, Double Throw) can be wired as normally open or normally closed.
- Large twin wall tear drop shape design offers increased buoyancy
- Two color housing allows for easy identification of float position
- Unique gold cross-point contacts provide precision and reliable control signals up to 1 amp
- Excellent solution for applications with high grease content
- CSA Certified
- 5 year limited warranty

Cable	Float	Max Water Depth	Maximum Electrical Load	Minimum Electrical Load	Description	Part Number
Flexible 18 gauge, 3 conductor (UL) SJOW, water-resistant (CPE)	4.03" dia. x 6.62" long high impact, corrosion resistant	30ft (9m) 13 PSI (90 kPa)	1 amp, 125 VAC	1 mA, 4 VDC	25MGMS PDT	1046500





## Liquid Level Alarms & Controls

### SJE VerticalMaster® - Pump Switch




- Mechanically activated switch is designed to operate in non-potable water & sewage applications with limited space
- Adjustable pumping range: .75" to 6.5"
- Maximum pump run current: 13 amps
- Maximum pump start current: 60 amps
- High impact, corrosion resistant housing for temps. up to 52°C (125°F)
- Not sensitive to turbulence
- 16 gauge, 2 conductor
- Includes stainless steel mounting bracket & hose clamp
- Injected molded acetal plastic lift rod
- Neoprene float stop
- This switch must be used with pumps that provide integral thermal overload protection
- Warranty: 2 year limited



Switching Action	Cable Length	Piggyback Plug	HP at Volts	Phase / Hz	Brand	Part Number
Pump Down	15'	No plug	1/2HP at 120VAC, 1HP at 230VAC	Single / 50-60	SJE Rhombus	1003777

### SJE Hi Temp Master® - Pump Switch




- Mechanically activated switch, wide-angle switch specifically designed for performance and dependability in high temperature sump applications up to 93°C (200°F)
- Snap action contacts
- High impact, corrosion resistant, polypropylene float housing
- Adjustable pump range of 8-36 inches (20-91 cm)
- Twin wall design of float housing (patent pending) protects internal components from heat and moisture
- This switch must be used with pumps that provide integral thermal overload protection
- Warranty: 5 year limited

Switching Action	Cable Length	Piggyback Plug	Max Amps	Phase / Hz	Brand	Part Number
Pump Down	30'	With plug	78@125VAC / 78@250VAC	Single / 50-60	SJE Rhombus	1043547
Pump Down	30'	With plug	78@125VAC / 78@250VAC	Single / 50-60	SJE Rhombus	1043550
Pump Down	30'	Without plug	78@125VAC / 78@250VAC	Single / 50-60	SJE Rhombus	1043555

### Wide Angle Float Pump Switch




- For use in sewage pumping stations, ground water pumping, drainage pumping and most other liquid level applications
- Starts or stops a pump or actuates an alarm device
- For pump up or pump down applications
- No wear, no maintenance
- Freely suspends at desired height from its own cable
- Contains no harmful or toxic materials such as lead or mercury and does not require the use of any adhesives
- All plastic components are welded and screwed together



Switching	Max Amps	Max. Temp	Cable	Brand	Part Number
SPDT	10A@250V / 6.5A@380V / 5A@250V DC	60°C (140°F)	20', 3 wire	Flygt	ENM10

**Pump down is normally open contacts for emptying. Pump up is normally closed contacts for filling. Switches used for direct wiring (without plug) may be used in either 120VAC or 230VAC applications within specified amp ratings.**

# Liquid Level Alarms & Controls

## Cable Weight & Clip For Pump Switches



- Provides a secure, adjustable, external pivot point for float switches
- Impact resistant, non-corrosive PVC housing to handle liquids up to 60C (140F)
- Gripper teeth on clip and weight channel securely lock float cable into place

Accessory	Description	Part Number
Cable Weight	Wire/cable accommodated: SJOW, SJTW, SJTW 18/3, 16/2, 16/3, 14/2, 14/3	1002230

## Float Ball - Copper



- HD round copper float ball
- 1/4"-20 threaded connection for float rod

Size	Part Number
5" - Use with 1" & 1-1/2" float valves	FBC5
6" - Use with 1/2" or 3/4" float valves	FBC6

## Float Ball - Poly



- Poly tank float
- Use with both metal and plastic float rods

Size	Part Number
4" x 5"	Q222

## Float Ball Rods



- Brass float ball rods

Size	Part Number
5"	FS5
10"	FS10

## Float Valves & Seal Kits



- Heavy duty bronze body
- 1/4", 20 SAE Tapped Rod Connection
- Comes with Buna-N disc

Size	Part Number
1/2"	28-BFV-05NL
3/4"	28-BFV-07NL
1"	28-BFV-10NL

Description	Part Number
Seal Kit for 1/2" Float Valve # 28-BFV-05NL	28-BFVP-SK0305
Seal Kit for 3/4" Float Valve # 28-BFV-07NL	28-BFVP-SK07
Seal Kit for 1" Float Valve # 28-BFV-10NL	28-BFVP-SK10