

Boilers

Gas Boiler - Residential (SENTRY®)



- Fuel: Natural Gas
- System: Hot Water
- Combustion: Natural Draft
- Ignition: Intermittent
- Energy Savings: AFUE to 84.4% -Highest in the Industry!
- Low Profile Design: Permits installation in sites with low chimney breeching or low overhead clearance. "S" Models can fit into a clearance of 38 1/2" and do not require a separate draft hood.
- Cast iron heat exchanger
- Lifetime limited warranty
- **Propane & Standing Pilot Models Available - Special Order Basis Only**

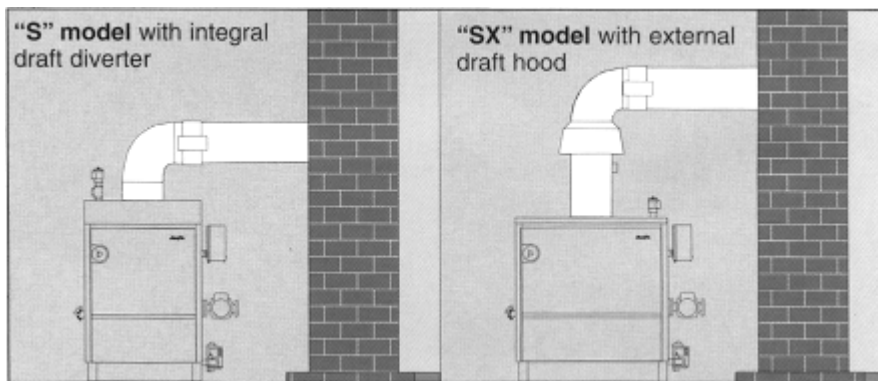


CSA Ratings* For Water				Net Ratings+				CSA Efficiency With Vent Damper	Brand	Part Number	
CSA Input W	CSA Input Btuh	Gross Output W	Gross Output Btuh	Water W	Water Btuh	Water m ²	Water Sq. Ft.	Intermittent Ignition		Sask Models (Regular)	Alberta Models (High Altitude)
10 000	34,000	9 000	29,000	7 000	25,000	16	167	84.0%	Slant/Fin	S-34XPED	S-34XPED-HA
26 000	90,000	22 000	76,000	19 000	66,000	41	440	84.2%	Slant/Fin	S-90XPED	S-90XPED-HA
35 000	120,000	30 000	101,000	26 000	88,000	55	587	84.1%	Slant/Fin	S-120XPED	S-120XPED-HA
53 000	180,000	44 000	151,000	38 000	131,000	68	873	83.1%	Slant/Fin	SX-180XPED	SX-180XPED-HA
62 000	210,000	51 000	175,000	45 000	152,000	8194	1013	83.1%	Slant/Fin	SX-210XPED	SX-210XPED-HA

+ Net ratings are based on a piping and pick-up allowance of 1.15 (hot water). Slant/Fin should be consulted before selecting a boiler for installation having unusual piping and pick-up requirements.

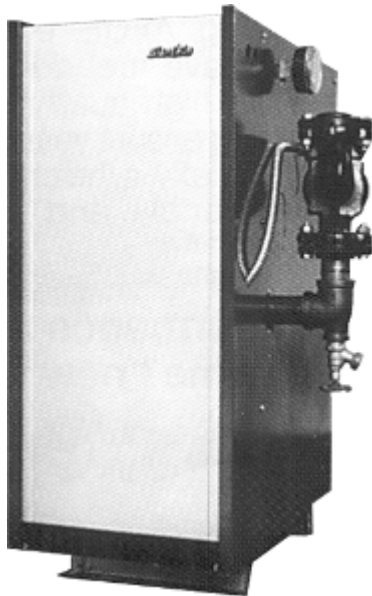
NOTE: Rating are for sea level to 610m (2,000 ft) elevation. For elevations over this, reduce rating by 10%

*****ALBERTA MUST USE HIGH ALTITUDE MODEL*****



Boilers

Gas Boiler - Commercial (GALAXY®)



- Fuel: Natural Gas
- System: Hot Water
- Combustion: Natural Draft
- Ignition: Intermittent
- Energy Savings: AFUE up to 82% -Highest in the Industry!
- Cast iron heat exchanger
- Lifetime limited warranty
- **Propane, Steam, Tankless Heater & Standing Pilot Models Available - Special Order Basis Only**

Slant/Fin.
GALAXY

CSA Ratings* For Water				Net Ratings+				CSA Efficiency With Vent Damper	Brand	Part Number	
CSA Input W	CSA Input Btuh	Gross Output W	Gross Output Btuh	Water W	Water Btuh	Water m ²	Water Sq. Ft.	Intermittent Ignition		Sask Models (Regular)	Alberta Models (High Altitude)
88 000	300 000	70 000	240,000	61 200	208,700	129.1	1390.0	80.0%	Slant/Fin	GG-300HXPE	GG-300HXPE-HA
117 000	399,000	96 000	327,000	83 600	284,400	176.1	1895.7	82.0%	Slant/Fin	GGH-399XPE	GGH-399XPE-HA

+ Net ratings are based on a piping and pick-up allowance of 1.15 (hot water). Slant/Fin should be consulted before selecting a boiler for installation having unusual piping and pick-up requirements.

NOTE: Rating are for sea level to 610m (2,000 ft) elevation. For elevations over this, reduce rating by 10%

*****ALBERTA MUST USE HIGH ALTITUDE MODEL*****

Boiler Feed Water Pressure Regulators

All Bronze Feed Water Pressure Regulator



- Purge lever, fast fill feature
- Cartridge replaceable in-line
- No case screws
- Individually set at 15 psig, adjustable range from 10 to 25 psig
- Max temperature 210F
- High capacity
- Stainless steel strainer, in-line, standard

Connection Size	Connection Type	Brand	Part Number
1/2"	NPT	Conbraco	35-603-01



Iron Body Feed Water Pressure Regulator



- Purge lever, fast fill feature
- Integral stainless steel strainer and unitized design for simplified servicing
- Max temperature 212F
- Max pressure 100 psi
- Adjustment range 10-25 lbs. Set at 15 psi
- High capacity
- Tight seating check valve feature

Connection Size	Connection Type	Brand	Part Number
1/2"	NPT	Watts	1156F



Bronze Body Feed Water Pressure Regulators



- N256-3/4 has integral stainless steel strainer and unitized design for simplified servicing
- T156B1/2 has separate stainless steel strainer and a purge lever, fast fill feature
- Max temperature 212F
- Max pressure 100 psi
- High capacity
- Tight seating check valve feature

Connection Size	Connection Type	Brand	Part Number
3/4"	NPT	Watts	N256-3/4
1/2"	Union Thread	Watts	T156B1/2



Boiler Feed Water Pressure Regulators

Boiler Feed Valves - Pressure Reducing



Bell & Gossett®



- Valves fill the system to a preset pressure for optimum performance
- Brass body construction is highly resistant to corrosion
- Low inlet pressure check valve help prevent loss of system pressure if the supply water drops below system pressure
- Cleanable strainer designed to prevent dirt and sediment from entering system

Size	Factory Setting	Adjustable Setting	Dimensions	Factory Number	Brand	Part Number
1/2" NPT	12 psig	10 - 25 psig	4 13/16" high x 3 1/16" wide	B-38	Bell & Gossett	110190
3/4" NPT	12 psig	10 - 25 psig	4 31/32" high x 3" wide	B7-12	Bell & Gossett	110196

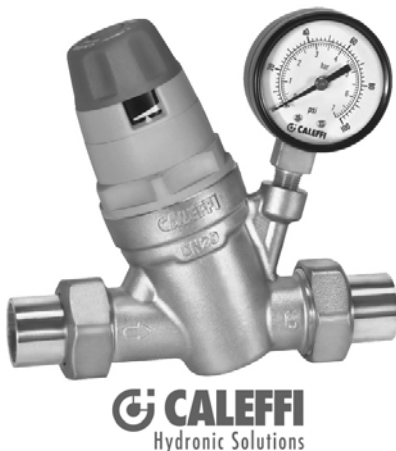
AutoFill™ Automatic Filling Valve



- Pre-adjustable, automatic filling valve
- Anti-scale with visual system pressure indicator
- Complete with manual shut-off valve, strainer and check valve
- Brass body
- Max inlet pressure: 230 psi
- Max working temp: 150°F (65°C)
- Setting pressure range: 3-60 psi
- Preset outlet pressure: 15 psi
- Pressure gauge scale: 0-60 psi/ 0-4 bar

Connections	Brand	Part Number
1/2" M NPT inlet x 1/2" F NPT outlet/gauge	Caleffi	553642A
1/2" M NPT inlet x 1/2" F NPT outlet	Caleffi	553542A
1/2" sweat inlet x 1/2" F NPT outlet/gauge	Caleffi	553649A
1/2" sweat inlet x 1/2" F NPT outlet	Caleffi	553549A

AutoFill™ Automatic Filling Valve



- Automatic filling valve
- Brass body
- Complete with integral downstream pressure gauge and pressure setting adjustment knob
- Max working pressure: 365 psi.
- Max working temperature: 140°F (60°C)
- Pressure gauge scale: 0-100 psi/ 0-7 bar
- Pressure setting range: 6-90 psi
- Preset outlet pressure: 15 psi

Connections	Brand	Part Number
3/4" NPT male union	Caleffi	535051A
3/4" sweat union	Caleffi	535059A

Boiler Pressure Regulators

Differential Pressure Regulator



- Used to eliminate excessive pump head pressure when most radiator valves are closed due to reduced demand
- Install between supply and return sides of a hydronic system to stabilize pressure differential and reduce the effects of demand changes
- Control maintains a constant differential between the two sides by opening a bypass whenever the difference between supply and return reaches the setpoint
- Provides silent, trouble-free service
- Easy installation; requires no electrical hookup
- Easy adjustment of pressure by turning regulating cap
- Built-in differential pressure indicator
- Brass body with thermoplastic and stainless steel parts and EPDM diaphragm

Honeywell Braukmann

Size	Capacities		Dimensions	Brand	Part Number
	Btu/hr	gpm			
3/4"	180,000	18	10 1/4" high, 4 7/8" wide	Honeywell Braukmann	D146M132
1 1/4"	500,000	50	14 1/2" high, 6 1/4" wide	Honeywell Braukmann	D146M140

Boiler Relief Valves

Hot Water Boiler Relief Valves



- Protection against excessive water pressure (from thermal expansion) and steam generated when Btu input controls fail
- Ideal for use with boilers, heating systems, and unfired pressure vessels

Size	Btu/Hour	PSIG	Brand	Part Number
3/4"	535,000	30	Conbraco	10-407-05
3/4"	510,000	30	Watts	M335M2

Water Pressure Safety Relief Valves



- For hot water heating and supply boilers
- Pressure protection only
- Bronze body construction resists corrosive water conditions of water supplies
- Standard Capacity

Size	Btu	psi	Brand	Part Number
3/4"	650,000	30	Watts	174A3/4-30
3/4"	875,000	45	Watts	174A3/4-45
3/4"	950,000	50	Watts	174A3/4-50
3/4"	1,320,000	75	Watts	174A3/4-75
3/4"	1,695,000	100	Watts	174A3/4-100
3/4"	2,070,000	125	Watts	174A3/4-125
3/4"	2,445,000	150	Watts	174A3/4-150
1"	1,005,000	30	Watts	174A1-30
1"	1,470,000	50	Watts	174A1-50
1"	2,055,000	75	Watts	174A1-75
1"	2,635,000	100	Watts	174A1-100
1"	3,215,000	125	Watts	174A1-125
1"	3,795,000	150	Watts	174A1-150
1 1/4"	1,682,000	30	Watts	174A11/4-30
1 1/4"	5,370,000	125	Watts	174A11/4-125
1 1/2"	2,020,000	30	Watts	174A11/2-30
2"	3,815,000	30	Watts	174A2-30

Boiler Relief Valves

Steam Safety Relief Valves



- For low pressure steam heating equipment
- Pressure protection only
- Bronze body construction resists corrosive water conditions of water supplies
- Standard Capacity

Size	Discharge Capacity Lbs/hr @ 15psi	psi	Brand	Part Number
3/4"	375	15	Watts	315M2-3/4-15
3/4"	450	15	Watts	415-3/4-15

Water Pressure Safety Relief Valves



- For hot water boiler pressure protection
- Expanded outlet drain connections
- Cast iron construction
- High capacity

Size	Btu	psi	Brand	Part Number
3/4"	925,000	30	Watts	740-3/4-30
3/4"	1,245,000	45	Watts	740-3/4-45
3/4"	1,352,000	50	Watts	740-3/4-50
3/4"	1,886,000	75	Watts	740-3/4-75
1"	1,300,000	30	Watts	740-1-30
1"	1,750,000	45	Watts	740-1-45
1"	1,899,000	50	Watts	740-1-50
1"	2,200,000	60	Watts	740-1-60
1"	2,649,000	75	Watts	740-1-75
1 1/4"	2,105,000	30	Watts	740-11/4-30
1 1/4"	2,830,000	45	Watts	740-11/4-45
1 1/4"	3,075,000	50	Watts	740-11/4-50
1 1/2"	2,900,000	30	Watts	740-11/2-30
1 1/2"	4,237,000	50	Watts	740-11/2-50

