

Unit Heaters

SGH Series - SPIDER™ Residential Ceiling Fan Heater



- New SPIDER™ ceiling fan heater combines optimum performance, instant heat and a low noise level, in a distinct design with a choice of striking colours
- Ideal for garage, workshop, specifically designed for residential use
- 22-gauge smooth steel housing, thermal protection with automatic reset, closed and permanently lubricated motor
- Nichrome element producing instant heat
- Wall thermostat (not included) - the use of an electronic thermostat is strongly recommended
- Ceiling surface mounted with bracket, from adjacent walls at minimum of: 12" (305mm), from floor at minimum of 8 ft (2.4m) and a maximum of 10 ft (3m)

Watts	Voltage	Color	Heat Rise	Brand	Part Number
4000/3000	240/208	Red	46°C / 83°F	Stelpro	SGH4002R
4000/3000	240/208	Yellow	46°C / 83°F	Stelpro	SGH4002Y
4000/3000	240/208	Stainless Steel	46°C / 83°F	Stelpro	SGH4002SS

Electric Unit Heaters - Commercial & Residential



- Well suited to situations where large amounts of heat must be provided in wide open spaces such as garages, workshops, commercial warehouses and construction sites
- Powerful output up to 5000 W with a voltage of 240
- Adjustable louvers that allow to direct heat from the source
- Provides instant heat with or without a built-in thermostat
- Quiet, lightweight and easy to install with a universal wall or ceiling mounting bracket
- Enclosed & permanently lubricated motor
- Epoxy-polyester powder coat. Colors included standard charcoal, white, almond, black, silver, clear anodized, nickel, champagne, light bronze, dark brown (10% surcharge)
- 20 gauge steel cabinet
- 350 cfm quiet helicoidal fan
- Nichrome element
- Built in thermostat (included with T series)
- **Recommended heating capacity: 1.25 W/cubic foot (0.03 m³)**

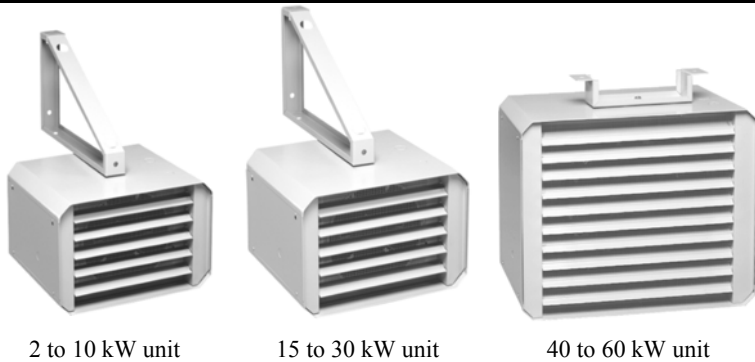
Watts	Volts	NB	CFM	BTU	Weight	Brand	Part Number
2000/1500	240/208	1	350	6826	20 lbs (9 kg)	Stelpro	RUH2CHAR
3000/2250	240/208	1	350	10239	20 lbs (9 kg)	Stelpro	RUH3CHAR
4000/3000	240/208	1	350	13652	20 lbs (9 kg)	Stelpro	RUH4CHAR
5000/3750	240/208	1	350	17065	20 lbs (9 kg)	Stelpro	RUH5CHAR
2000/1500	240/208	1	350	6826	20 lbs (9 kg)	Stelpro	RUH2TCHAR
3000/2250	240/208	1	350	10239	20 lbs (9 kg)	Stelpro	RUH3TCHAR
4000/3000	240/208	1	350	13652	20 lbs (9 kg)	Stelpro	RUH4TCHAR
5000/3750	240/208	1	350	17065	20 lbs (9 kg)	Stelpro	RUH5TCHAR

°STELPRO

360 comfort

Unit Heaters

Electric Unit Heaters - Commercial Industrial



2 to 10 kW unit

15 to 30 kW unit

40 to 60 kW unit



STELPRO

360 comfort

- Robust and easy to install
- Great option for heating large spaces like garages, warehouses, and commercial buildings
- Offered in 3 different types of cabinets, ranging from 2 kW up to 60 kW
- Permanently lubricated motor on ball bearings
- Nichrome Element ensuring instantaneous heat without any cold drafts on startup
- Heavy duty 18-gauge steel cabinet
- Adjustable louvers and protective screen
- Thermal protection with automatic reset
- Almond color, epoxy-polyester powdercoat
- 10 year warranty for the element and 1 year for other components
- **Recommended heating capacity: 1.25 W/cubic foot (0.03 m³)**

Without Control	Built-in Thermostat	240 V Contactor	240 V Contactor & Built-in Th.	24 V Control	Volts	240 V Contactor	240 V Contactor & Built-in Th.	24 V Control	Volts
Part Number	Part Number	Part Number	Part Number	Part Number	Volts	Part Number	Part Number	Part Number	Volts
SHU0281	SHU0281T	SHU0281C	--	SHU0281C24	208	SHU1081C	SHU1081CT	SHU1081C24	208
--	--	SHU0283C**	SHU0283CT**	SHU0283C24**	208	SHU1083C**	SHU1083CT**	SHU1083C24**	208
SHU0221	SHU0221T	SHU0221C	--	SHU0221C24	240	SHU1021C	SHU1021CT	SHU1021C24	240
SHU0271	SHU0271T	SHU0271C	--	SHU0271C24	277	SHU1071C	SHU1071CT	SHU1071C24	277
--	--	SHU0231C	SHU0231CT	SHU0231C24	347	SHU1031C	SHU1031CT	SHU1031C24	347
--	--	SHU0251C	SHU0251CT	SHU0251C24	480	SHU1051C	SHU1051CT	SHU1051C24	480
--	--	SHU0253C*	SHU0253CT*	SHU0253C24*	480	SHU1053C**	SHU1053CT**	SHU1053C24**	480
--	--	SHU0261C*	SHU0261CT*	SHU0261C24*	600	SHU1061C	SHU1061CT	SHU1061C24	600
--	--	SHU0263C*	SHU0263CT*	SHU0263C24*	600	SHU1063C*	SHU1063CT*	SHU1063C24*	600
SHU0381	SHU0381T	SHU0381C	--	SHU0381C24	208	SHU1581C	SHU1581CT	SHU1581C24	208
--	--	SHU0383C**	SHU0383CT**	SHU0383C24**	208	SHU1583C**	SHU1583CT**	SHU1583C24**	208
SHU0321	SHU0321T	SHU0321C	--	SHU0321C24	240	SHU1521C	SHU1521CT	SHU1521C24	240
SHU0371	SHU0371T	SHU0371C	--	SHU0371C24	277	SHU1571C	SHU1571CT	SHU1571C24	277
--	--	SHU0331C	SHU0331CT	SHU0331C24	347	SHU1531C	SHU1531CT	SHU1531C24	347
--	--	SHU0351C	SHU0351CT	SHU0351C24	480	SHU1551C	SHU1551CT	SHU1551C24	480
--	--	SHU0353C**	SHU0353CT**	SHU0353C24**	480	SHU1553C**	SHU1553CT**	SHU1553C24**	480
--	--	SHU0361C	SHU0361CT	SHU0361C24	600	SHU1561C	SHU1561CT	SHU1561C24	600
--	--	SHU0363C*	SHU0363CT*	SHU0363C24*	600	SHU1563*	SHU1563CT*	SHU1563C24*	600
SHU0481	SHU0481T	SHU0481C	--	SHU0481C24	208	SHU2081C	SHU2081CT	SHU2081C24	208
--	--	SHU0483C**	SHU0483CT**	SHU0483C24**	208	SHU2083C**	SHU2083CT**	SHU2083C24**	208
SHU0421	SHU0421T	SHU0421C	--	SHU0421C24	240	SHU2021C	SHU2021CT	SHU2021C24	240
SHU0471	SHU0471T	SHU0471C	--	SHU0471C24	277	SHU2071C	SHU2071CT	SHU2071C24	277
--	--	SHU0431C	SHU0431CT	SHU0431C24	347	SHU2031C	SHU2031CT	SHU2031C24	347
--	--	SHU0451C	SHU0451CT	SHU0451C24	480	SHU2051C	SHU2051CT	SHU2051C24	480
--	--	SHU0453C**	SHU0453CT**	SHU0453C24**	480	SHU2053C**	SHU2053CT**	SHU2053C24**	480
--	--	SHU0461C	SHU0461CT	SHU0461C24	600	SHU2063C*	SHU2063CT*	SHU2063C24	600
--	--	SHU0463C*	SHU0463CT*	SHU0463C24*	600	SHU2583C*	SHU2583CT*	SHU2583C24*	208
--	SHU0581T	SHU0581C	--	SHU0581C24	208	SHU2553C**	SHU2553CT**	SHU2553C24**	480
--	--	SHU0853C**	SHU0853CT**	SHU0853C24**	208	SHU2563C*	SHU2563CT*	SHU2563C24*	600
SHU0521	SHU0521T	SHU0521C	--	SHU0521C24	240	SHU3083C*	SHU3083CT*	SHU3083C24*	208
SHU0571	SHU0571T	SHU0571C	--	SHU0571C24	277	SHU3053C*	SHU3053CT*	SHU3053C24*	480
--	--	SHU0531C	SHU0531CT	SHU0531C24	347	SHU3063C*	SHU3063CT*	SHU3063C24*	600
--	--	SHU0551C	SHU0551CT	SHU0551C24	480	SHU4053C*	SHU4053CT*	SHU4053C24*	408
--	--	SHU0553C**	SHU0553CT**	SHU0553C24**	480	SHU4063C*	SHU4063CT*	SHU4063C24*	600
--	--	SHU0561C	SHU0561CT	SHU0561C24	600	SHU5053C*	SHU5053CT*	SHU5053C24*	408
--	--	SHU0563C*	SHU0563CT*	SHU0563C24*	600	SHU5063C*	SHU5063CT*	SHU5063C24*	600
--	--	SHU0781C	SHU0781CT	SHU0781C24	208	SHU6053C*	SHU6053CT*	SHU6053C24*	480
--	--	SHU0783C**	SHU0783CT**	SHU0783C24**	208	SHU6063C*	SHU6063CT*	SHU6063C24*	600
--	--	SHU0721C	SHU0721CT	SHU0721C24	240				
--	--	SHU0771C	SHU0771CT	SHU0771C24	277				
--	--	SHU0731C	SHU0731CT	SHU0731C24	347				
--	--	SHU0751C	SHU0751CT	SHU0751C24	480				
--	--	SHU0753C**	SHU0753CT**	SHU0753C24**	480				
--	--	SHU0761C	SHU0761CT	SHU0761C24	600				
--	--	SHU0763C*	SHU0763CT*	SHU0763C24*	600				

* Three Phase Unit

** Three Phase Unit that can be field-converted to a Single Phase Unit

-- Not Available

Unit Heaters

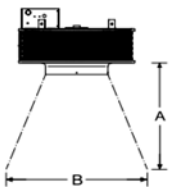
Electric Unit Heaters - Vertical



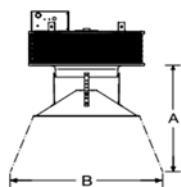
- Heat recycling system, with air intake on it's sides draws in the warm air at the ceiling and redirects it where it is needed most
- Cone diffusers (optional) three sizes are available for better air distribution
- Totally enclosed motor with ball bearings
- Perfect for large spaces with high ceilings, warehouses, factories, commercial building lobbies with a high heat loss
- Fan switch transforms this heater into a fan-only mode
- Almond color, epoxy-polyester powdercoat
- Heavy-duty, 16-gauge steel cabinet
- Thermal protection with automatic reset
- Tubular element sheathed with spiral-wound fins for improved heat dissipation
- 240 V control circuit, all units have factory installed contactors
- 3 year warranty
- **Recommended heating capacity: 1.25 W/cubic foot (0.03 m³)**

240 V Contactor	24 V Contactor	120 V Control	Power kW	Volts	Phase NB.	BTU/H	CFM	Motor HP
VUH0581C	VUH0581C24	VUH0581C120	5	208	1	17060	450	1/25
VUH0583C	VUH0583C24	VUH0583C120	5	208	3	17060	450	1/25
VUH0521C	VUH0521C24	VUH0521C120	5	240	1	17060	450	1/25
VUH0531C	VUH0531C24	VUH0531C120	5	347	1	17060	450	1/25
VUH0563C	VUH0563C24	VUH0563C120	5	600	3	17060	450	1/25
VUH0783C	VUH0783C24	VUH0783C120	7.5	208	3	25590	600	1/25
VUH0721C	VUH0721C24	VUH0721C120	7.5	240	1	25590	600	1/25
VUH0731C	VUH0731C24	VUH0731C120	7.5	347	1	25590	600	1/25
VUH0763C	VUH0763C24	VUH0763C120	7.5	600	3	25590	600	1/25
VUH1083C	VUH1083C24	VUH1083C120	10	208	3	34120	750	1/25
VUH1021C	VUH1021C24	VUH1021C120	10	240	1	34120	750	1/25
VUH1031C	VUH1031C24	VUH1031C120	10	347	1	34120	750	1/25
VUH1063C	VUH1063C24	VUH1063C120	10	600	3	34120	750	1/25
VUH1583C	VUH1583C24	VUH1583C120	15	208	3	51180	1200	1/8
VUH1521C	VUH1521C24	VUH1521C120	15	240	1	51180	1200	1/8
VUH1563C	VUH1563C24	VUH1563C120	15	600	3	51180	1200	1/8
VUH2083C	VUH2083C24	VUH2083C120	20	208	3	68240	1600	1/8
VUH2021C	VUH2021C24	VUH2021C120	20	240	1	68240	1600	1/8
VUH2063C	VUH2063C24	VUH2063C120	20	600	3	68240	1600	1/8
VUH2583C	VUH2583C24	VUH2583C120	25	208	3	85300	2000	1/8
VUH2521C	VUH2521C24	VUH2521C120	25	240	1	85300	2000	1/8
VUH2563C	VUH2563C24	VUH2563C120	25	600	3	85300	2000	1/8
VUH3083C	VUH3083C24	VUH3083C120	30	208	3	102300	2300	1/8
VUH3021C	VUH3021C24	VUH3021C120	30	240	1	102300	2300	1/8
VUH3063C	VUH3063C24	VUH3063C120	30	600	3	102300	2300	1/8
VUH4063C	VUH4063C24	VUH4063C120	40	600	3	136500	4000	3/4
VUH5063C	VUH5063C24	VUH5063C120	50	600	3	176050	4000	3/4
VUH6063C	VUH6063C24	VUH6063C120	60	600	3	204720	4800	3/4

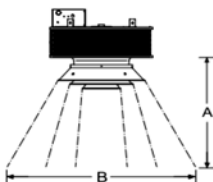
WITHOUT CONE



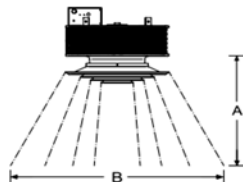
SINGLE CONE



TRIPLE CONE



QUADRUPLE CONE



Cone Diffusers

Part Number	Cone	kW	Weight	Surface A	Surface B
---	Without cone	5-10	75 lbs (34 kg)	12 ft (3.7 m)	19 ft (5.8 m)
---	Without cone	15-30	105 lbs (47.6 kg)	20 ft (6.1 m)	27 ft (8.3 m)
---	Without cone	40-60	200 lbs (90.7 kg)	30 ft (9.1 m)	46 ft (14 m)
VUHSC1	Single	5-10	75 lbs (34 kg)	10 ft (3.1 m)	22 ft (6.9 m)
VUHSC2	Single	15-30	105 lbs (47.6 kg)	12 ft (3.7 m)	31 ft (9.5 m)
VUHSC3	Single	40-60	200 lbs (90.7 kg)	16 ft (4.9 m)	33 ft (10 m)
VUH3C1	Triple	5-10	75 lbs (34 kg)	10 ft (3.1 m)	31 ft (9.5 m)
VUH3C2	Triple	15-30	105 lbs (47.6 kg)	15 ft (4.2 m)	46 ft (14 m)
VUH3C3	Triple	40-60	200 lbs (90.7 kg)	20 ft (6.1 m)	49 ft (15 m)
VUH4C1	Quadruple	5-10	75 lbs (34 kg)	10 ft (3.1 m)	34 ft (10.4 m)
VUH4C2	Quadruple	15-30	105 lbs (47.6 kg)	15 ft (4.2 m)	50 ft (15.3 m)
VUH 4C3	Quadruple	40-60	200 lbs (90.7 kg)	20 ft (6.1 m)	56 ft (17.1 m)



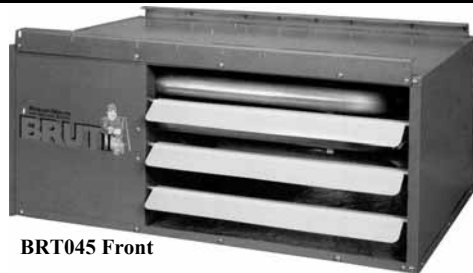
STELPRO

C US

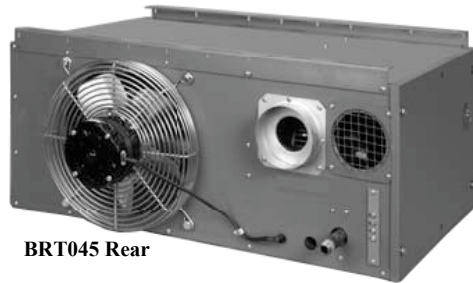
360 comfort

Unit Heaters

Gas Fired Unit Heaters (BRT)



BRT045 Front



BRT045 Rear

- Single orifice burner system
- Direct spark ignition
- Over 80% thermal (combustion) efficiency
- 20 Gauge steel jacket with baked enamel finish
- OSHA fan guards
- 115/1/60 fan motor with internal overload protection
- Power Vented - Sidewall or Chimney
- Redundant single stage gas valve
- Sturdy fan blade guard
- 120/24 control transformer
- Right hand control access - field convertible to left hand
- 321 stainless steel burner box
- External thermostat terminal strip
- Limited 10 year warranty on heat exchanger, flue collector and burner
- Various optional equipment also available
- **Gas Conversion Kit Included**



Total Input BTU/HR*	Total Output BTU/HR	Air Volume CFM	Temp Rise	Air Throw At 8' Mounting Height (FT)	Max Mounting Height (floor to bottom of unit FT)	Flue Size	Gas Connection	Full Load Amps @120V	Brand	Part Number
30,000	24,300	370	60F	33'	10'	4"	1/2"	3.0	Beacon/Morris	BRT030
45,000	36,450	550	60F	33'	10'	4"	1/2"	3.0	Beacon/Morris	BRT045
60,000	48,600	740	60F	33'	10'	4"	1/2"	4.1	Beacon/Morris	BRT060
75,000	60,750	920	60F	40'	10'	4"	1/2"	4.1	Beacon/Morris	BRT075
90,000	72,900	1,100	60F	40'	10'	4"	1/2"	6.4	Beacon/Morris	BRT090
105,000	85,050	1,300	60F	60'	12'	4"	1/2"	6.4	Beacon/Morris	BRT105
120,000	97,200	1,400	60F	65'	12'	4"	1/2"	6.4	Beacon/Morris	BRT120

* Ratings shown are for unit installations at elevations between 0 and 2,000 feet. For installations in Canada, any reference to duration at altitudes in excess of 2,000 ft. are to be ignored. At altitudes of 2,000 ft. to 4,500 ft., the unit must be derated to 90% of the normal altitude rating, and be so marked in accordance with the ETL certification. For unit installations in the U.S.A above 2,000 ft., the unit input must be derated 4% for each 1,000 ft. above sea level.

Quick Swivel with "H" Bracket



QUICK-SLING®

- Provides a non-swinging, rotating platform that is quick, safe, stable and affordable
- Turn the swivel in any direction then lock it in place
- Flush mount hanger is slotted to receive a 3/8 lag bolt 16" or 24" on center. It can be attached parallel or perpendicular to the joist.
- Square steel tubing cuts down on vibration while 3 hitch-pins add to the safety and sturdiness
- Powder coated 14 gauge steel
- Installation hardware included

Description	Brand	Part Number
Holds up to 200 lbs. 360° rotation	Quick-Sling	QSWI3000

Unit Heaters

Gas Fired Unit Heaters (BTU)



BTU150 Front



BTU150 Rear



- Inshot burner design
- Direct spark ignition
- Over 80% thermal (combustion) efficiency
- Individually adjustable and removable louvers
- 20 Gauge steel jacket with baked enamel finish
- Power vented
- Single stage combination gas valve
- Right hand control access
- 120/1/60 supply voltage
- 120/24 volt control transformer
- 115/1/60 volt fan motor with internal overload protection
- Limited 10 year warranty on heat exchanger, flue collector and burner
- Optional blower nozzles available
- **Gas Conversion Kit Sold Separately**

Total Input BTU/HR*	Total Output BTU/HR	Air Volume CFM	Temp Rise	Air Throw At 8' Mounting Height (FT)	Max Mounting Height (floor to bottom of unit FT)	Flue Size	Gas Connection	Full Load Amps @120V	Brand	Part Number
150,000	121,500	2,400	47F	70'	15'	5"	1/2"	5.8	Beacon/Morris	BTU150
175,000	141,750	2,850	46F	75'	15'	5"	1/2"	8.0	Beacon/Morris	BTU175
200,000	162,000	3,200	47F	80'	20'	5"	1/2"	8.0	Beacon/Morris	BTU200
250,000	202,500	3,450	54F	90'	20'	5"	3/4"	8.0	Beacon/Morris	BTU250
300,000	243,000	5,000	45F	105'	20'	6"	3/4"	11.3	Beacon/Morris	BTU300
350,000	283,000	5,600	47F	110'	20'	6"	3/4"	13.5	Beacon/Morris	BTU350
400,000	324,000	5,800	51F	120'	20'	6"	3/4"	13.5	Beacon/Morris	BTU400

* Published ratings are shown for elevations up to 2,000 feet above sea level. For higher elevations, derate 4% for each 1,000 feet above sea level. In Canada, derate 10% for altitudes 2,000 to 4,500 feet.



Unit Heater Venting

Venting For Gas Fired Unit Heaters

- Stainless steel Single wall special gas venting system suitable for venting Category II, III or IV Gas Burning Appliances and Direct Vent Units. Also great for gas fired tankless water heaters.
- Designed for quick installation
- Manufactured from a unique high corrosion resistant stainless steel alloy which has lower thermal expansion and contracting compared to plastic and other resin based materials
- Cut-to-length OR adjustable lengths available
- Factory installed Double Fail-Safe™ self sealing gaskets ensures an air-tight, water-tight fit
- NO sealant required - saves installation time and money!
- Temperature Limit: 550°F (288°C) exiting continuous flue gas temperature

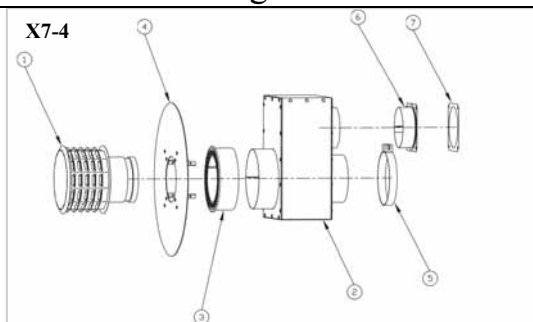
NovaVENT™ 



Description	4" Part Number	5" Part Number
Appliance Adapters		
Lennox/Armstrong/ADP Adapter	2NVUHA3	2NVUHA3
Eccentric Increaser	N/A	-
Increaser (Fits Beacon Morris Brut Unit Heater)	2NVI4I5	-
Adapter (Fits Beacon Morris Brut Unit Heater)	2NVRHA4	2NVRHA5
Universal Adapter	2NVAFF4	2NVAFF5
Elbows - 45° & 90°		
45° Elbow	2NVE445	2NVE545
90° Elbow	2NVE490	2NVE590
Pipe		
1'	2NVP41	2NVP51
18"	2NVP41.5	2NVP51.5
2'	2NVP42	2NVP52
3'	2NVP43	2NVP54
4'	2NVP44	2NVP54
5'	2NVP45	-
Pipe (Adjustable)		
Adjustable Length	2NVALL4	2NVALL5
Terminations		
Termination Box	2NVTB4	2NVTB5
Termination Hood	2SVSHTX04	-
Termination Tee	2NVTT4	2NVTT5
Wall Thimble (Adjustable)		
Adjusts from 4" to 7" wall thickness	2NVWT4	2NVWT5
Adjusts from 5" to 10" wall thickness	2NVWT4L	2NVWT5L

3" Appliance Adapters	
Description	Part Number
Universal Adapter	2NVAFF3
Hot Dawg Adapter	2NVHDA3
Lennox/Armstrong/ADP Adapter	2NVUHA3
3" to 4" Eccentric Increaser	2NVI3I4

Concentric Venting Kits For Gas Fired Unit Heaters



Description	Part Number
4" Inlet, For BRT030 to BRT075	X7-4
5" Inlet, For BRT090 to BRT120	X7-5

Kit Contents	
1. Flue Vent Terminal	6. Inlet Air Collar
2. Combustion Air inlet Box Assembly	7. Inlet air Collar Gasket
3. Air inlet Screen	Installation Instructions
4. Deflector Disc	High Temp Silicone Sealant
5. Vent Box Clamp	Access Panel Gasket

Unit Heaters

Hydronic Unit Heaters - Horizontal (HB)



- For residential and commercial hot water only or steam & hot water applications
- Copper coils with aluminum fins
- Individually adjustable and removable louvers
- 20 Gauge steel jacket with baked enamel finish
- OSHA fan guards standard on all serpentine coil models and header type models HB018 through HB048 equipped with single phase standard motors. These fan guards can be added as an optional accessory to models HB060 through HB360 when equipped with a single stage standard motor.
- Heaters with OSHA fan guards can be installed in residential applications
- 115/1/60 supply voltage
- 115/1/60 volt totally enclosed motor with internal overload protection
- 1 year warranty
- Available Options: Thermostats, strap-on hot water control, steam pressure control, manual starters, vertical louvers, wall mounted speed controllers, 230V or three phase standard motors, single & three phase explosion proof motors. Note: All sizes with three phase or explosion proof motors are shelf mounted and standard fan guards can be added as an optional accessory.

Capacity* BTU/HR	Max Mounting Height	Max Throw (approx)	Brand	Part Number
Serpentine Models - Hot Water Coil				
8,300	8'	20'	Beacon/Morris	HB108A
18,400	8'	25'	Beacon/Morris	HB118A
24,800	9'	29'	Beacon/Morris	HB125A
35,900	89	29'	Beacon/Morris	HB136A

* Serpentine capacities based on 200°F EWT, 60°F EAT, 20°F TD.
Header type capacities based on 2 psi steam.

Capacity* BTU/HR	Max Mounting Height	Max Throw (approx)	Brand	Part Number
Header Type Models - Steam & Hot Water Coil				
18,000	8'	20'	Beacon/Morris	HB018
24,000	8'	24'	Beacon/Morris	HB024
36,000	9'	28'	Beacon/Morris	HB036
48,000	9'	30'	Beacon/Morris	HB048
60,000	10'	30'	Beacon/Morris	HB060
72,000	10'	29'	Beacon/Morris	HB072
84,000	10'	30'	Beacon/Morris	HB084
96,000	11'	38'	Beacon/Morris	HB096
108,000	11'	40'	Beacon/Morris	HB108
120,000	12'	40'	Beacon/Morris	HB120
132,000	13'	54'	Beacon/Morris	HB132
144,000	13'	55'	Beacon/Morris	HB144
156,000	13'	55'	Beacon/Morris	HB156
180,000	13'	53'	Beacon/Morris	HB180
204,000	13'	55'	Beacon/Morris	HB204
240,000	14'	57'	Beacon/Morris	HB240
280,000	14'	57'	Beacon/Morris	HB280
300,000	15'	58'	Beacon/Morris	HB300
360,000	15'	60'	Beacon/Morris	HB360



Unit Heaters

Hydronic Unit Heaters - Vertical (VB)



- For commercial and industrial steam & hot water applications
- Mounted near the ceiling, these units provide air circulation and reduces stratifications without occupying otherwise usable building space
- Copper coils with aluminum fins
- Aluminum fan blades are quiet, factory balanced and sturdy for standard or spark-proof applications
- Two 20 Gauge steel plates with baked enamel finish case the unit
- Standard units are field convertible to low output by removing air port knockouts located on top of the unit
- 4 point suspension
- Standard coils have 0.25 copper tubing suitable for use on steam pressures to 75 PSI or hot water up to 225 PSI or 325°F
- 115/1/60 supply voltage
- 115/1/60 volt totally enclosed motor with internal overload protection. Heater sizes 40-104 can be operated at multiple speeds with the addition of a solid state control
- Supply and return connections are steel pipe
- To meet ETL and OSHA requirements, units mounted below 8' must be equipped with an OSHA fan guard. If adjustments to the vertical airflow pattern are desired, the louver cone diffuser can be installed. Note: A single unit can support either an OSHA fan guard or a louver cone diffuse, not both
- 1 year warranty
- Available Options: Diffuser for patterned discharge, no diffuser for higher velocity 'spot' heating near doorways and other high loss areas, OSHA fan guard, 230-460V/60/3 motors for units smaller than 370, 1140 RPM explosion proof motors, thermostats, strap-on hot water control, steam pressure control, manual starters, wall mounted speed controllers

Capacity* BTU/HR	Max Mounting Height @Steam Pressure PSI					Brand	Part Number
	2	5	10	50	75		
40,000	10.5'	10.0'	10.0'	9.0'	8.0'	Beacon/Morris	VB040
62,000	12.0'	11.5'	11.5'	10.0'	9.5'	Beacon/Morris	VB062
77,000	15.0'	14.5'	14.0'	12.0'	11.5'	Beacon/Morris	VB077
104,000	14.0'	13.5'	13.0'	11.5'	11.0'	Beacon/Morris	VB104
125,000	16.0'	15.5'	15.5'	14.0'	13.5'	Beacon/Morris	VB125
144,000	15.5'	15.0'	14.5'	13.0'	12.0'	Beacon/Morris	VB144
164,000	18.0'	17.58'	17.0'	14.5'	14.0'	Beacon/Morris	VB164
200,000	22.0'	21.5'	21.0'	18.5'	17.5'	Beacon/Morris	VB200
237,000	20.0'	19.5'	19.0'	17.0'	16.0'	Beacon/Morris	VB237
285,000	21.0'	20.5'	20.0'	17.5'	17.0'	Beacon/Morris	VB285
317,000	24.0'	23.0'	22.0'	20.0'	19.0'	Beacon/Morris	VB317
367,000	28.5'	28.0'	27.5'	24.0'	23.0'	Beacon/Morris	VB367
495,000	29.0'	29.0'	28.5'	25.0'	24.0'	Beacon/Morris	VB495
585,000	34.0'	33.0'	32.0'	38.0'	27.0'	Beacon/Morris	VB585
700,000	38.5'	37.5'	36.5'	32.0'	30.5'	Beacon/Morris	VB700

* Capacities based on 2 psi steam

